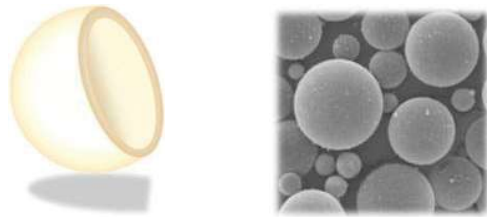


UNICELL- HMS Series

Description

UNICELL-HMS are hollow expanded microspheres. They are an expanded type of UNICELL-MS. These products can be used as ultra light fillers.

Structure



Feature

- Extremely low density, 0.017~0.165g/cm³
- Excellent elasticity
- Excellent Solvent resistance
- Excellent sandability

Products

Item	Specifications	
	APS(μm)	Density(kg/m ³)
HMS A grade	Softening point : 120℃	
A20D/A50D/A100D	15~150	17~50
HMS C grade	Coated hollow microsphere	
C20D/C50D/C100D	15~150	75~165

· We have wet type of product. (with 15% Solid content)

Applications

Toy Clay



Auxiliaries for Natural leather



Insulation Paint



Car repairing



Cable filler



Sensitizer of emulsion explosives



Window Cushion Tape

